

## **Rock Creek to Pine Creek Via Muir Trail**

**Distance** 51 miles

**Elevation Gain:** 10,170 Feet Up and 12,500 Feet Down

**Location:** Mosquito Flat Trailhead/Rock Creek

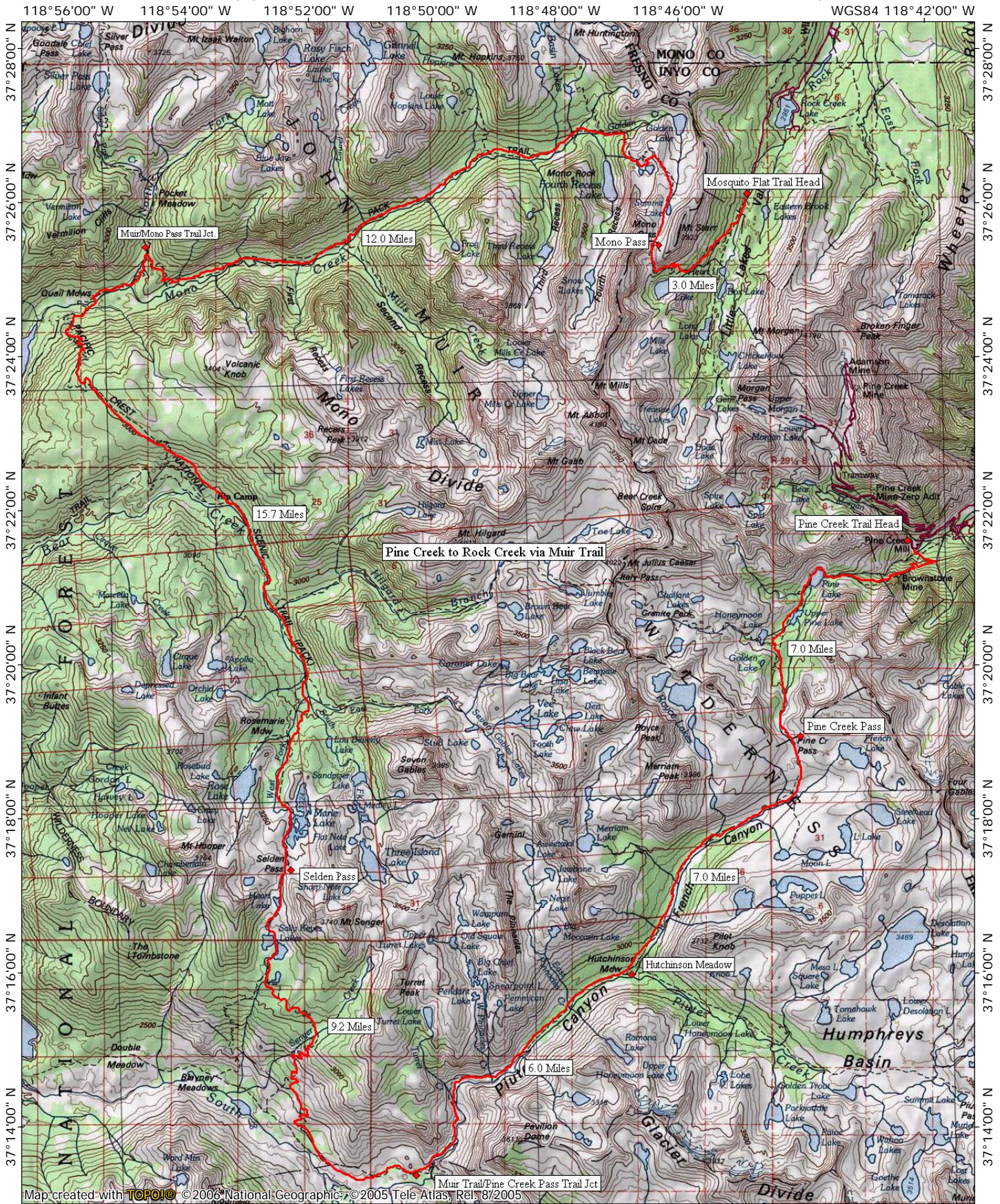
**Time of Year:** Mid June to Mid October (Snow is likely going up to the pass until late July).

**Directions from Bishop:** Follow 395 north from Bishop about 35 miles to Tom's Place, Turn left here and follow Upper Rock Creek road to Mosquito Flats, about 10 miles.

**Description:** Head up the trail to Mono Pass (take the right hand fork about 1/4 mile up), Mono Pass is 3 miles and 2,100 feet up. From the pass it is 12 miles and 4200 feet down to the junction with the John Muir Trail. The next section is a long uphill to Seldon Pass, 11 miles and 3,000 feet up. From Seldon Pass you have a steep 7 miles down, 3,000 feet, to where the Muir Trail junctions with the Piute Pass Trail. Turn left and head up towards Piute Pass. The trail forks at Hutchinson Meadow, 6 miles and 2,000 feet up later. Take the left hand fork to Pine Creek Pass, 7 miles and 1,100 feet up. From Pine Creek Pass it is a long downhill to the trail head, 7 miles and 3,300 feet.

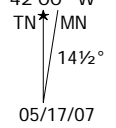
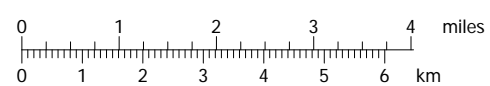


TOPO! map printed on 05/17/07 from "Rock Creek to Pine Creek via Muir Trail.tpo"



Map created with TOPO! © 2006 National Geographic © 2005 Tele Atlas, Rel. 8/2005

118°56'00" W 118°54'00" W 118°52'00" W 118°50'00" W 118°48'00" W 118°46'00" W WGS84 118°42'00" W



05/17/07