

Antelope Loop**Distance** 7.6 miles**Elevation Gain:** 760 Feet Up and 760 Feet Down**Location:** One mile north of Mammoth Jct**Time of Year:** April to mid-November**Directions from Bishop:** Take Highway 395 north 40 miles to Highway 203 (Mammoth Jct). Turn right or east on Highway 203, then turn left about 50 yards down the road.

Follow the road about 1 mile until it turns to dirt. Start here.

Description: This is a favorite running area, particularly in the spring, for the Mammoth Striders. There are many intersecting dirt roads in this area, so attempting to describe the road is difficult. Explore and have fun.

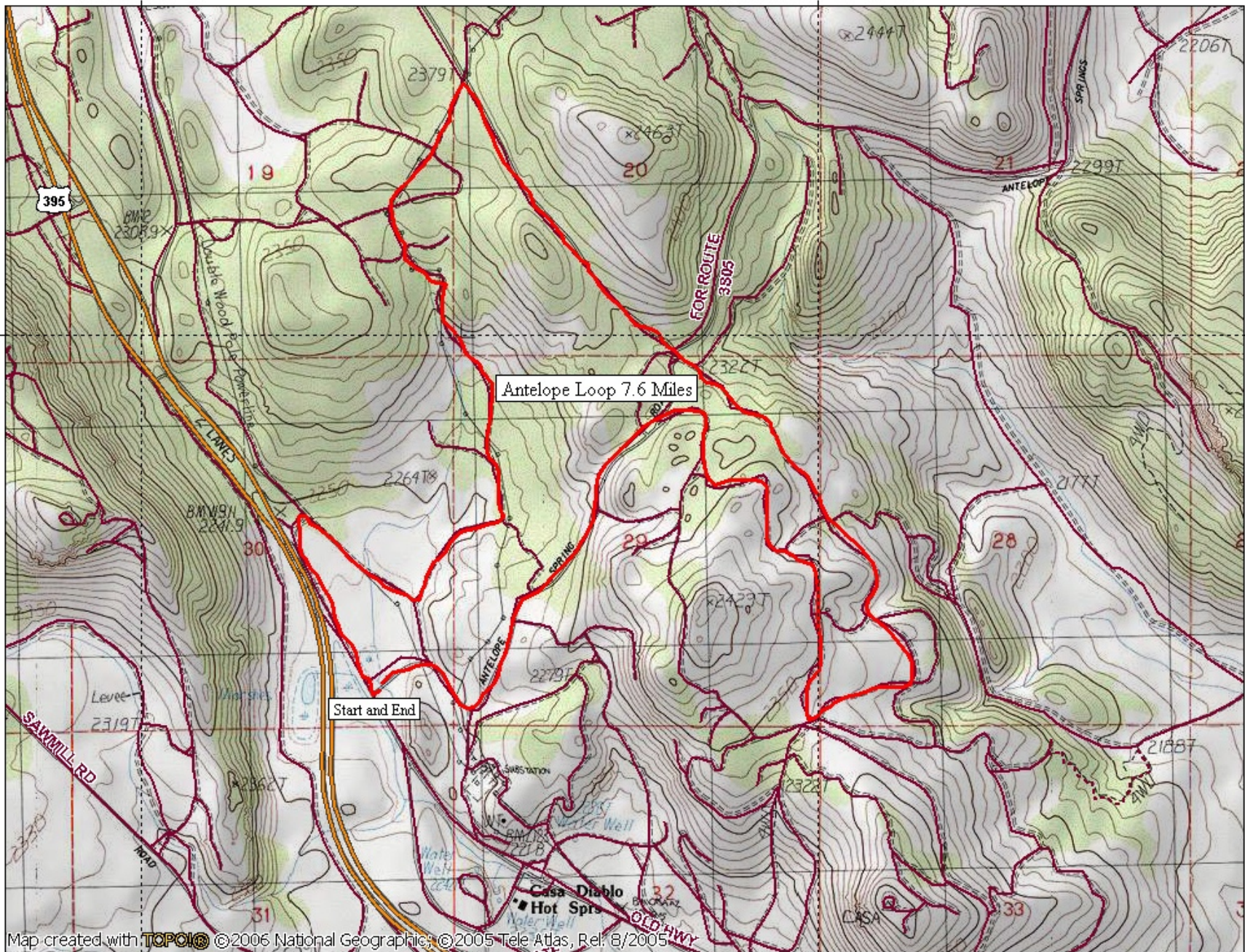
TOPO! map printed on 02/01/07 from "Antelope Loop.tpo"

118°56'00" W

WGS84 118°54'00" W

37°40'00" N

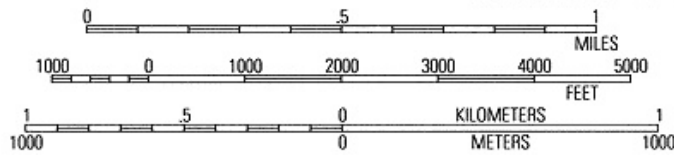
37°40'00" N



Map created with TOPO! © 2006 National Geographic; © 2005 Tele Atlas, Rel. 8/2005

118°56'00" W

WGS84 118°54'00" W



TN MN
14½°
02/01/07