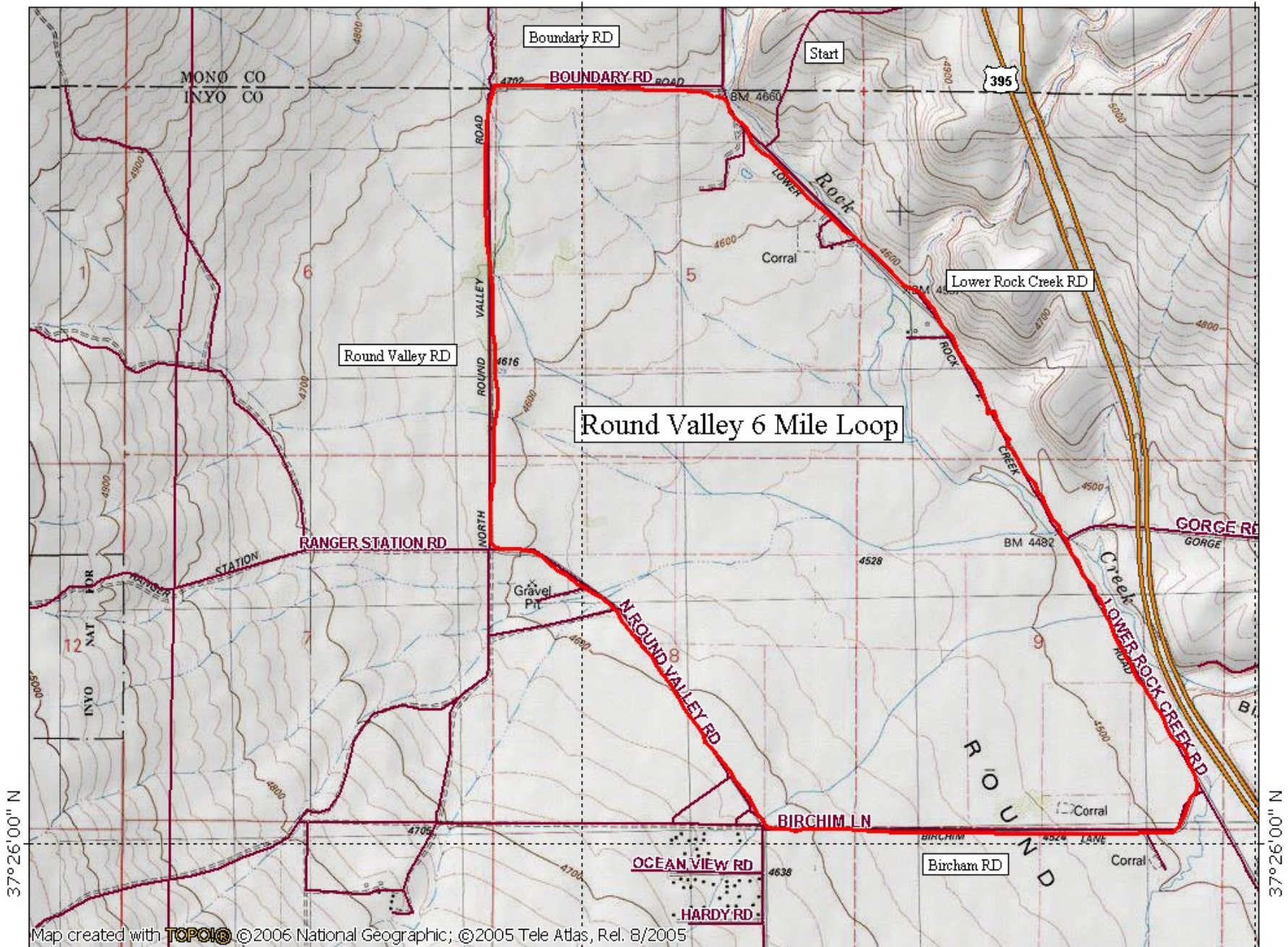


Round Valley 6 Mile Loop**Distance:** 6.6 Miles**Elevation Gain:** 200 Feet**Location:** Rovana, CA**Time of Year:** All Year (there can be too much snow after a big cold storm)**Directions from Bishop:** North on 395 approx 9 miles. West (Left) on Gorge Road (Paradise turnoff). Drive 0.2 Miles to Lower Rock Creek Road and park.**Description:** Begin running north up Little Rock Creek 1.4 miles to Boundary Road and turn left. Boundary road is dirt, follow it 0.5 miles till it turns and becomes North Round Valley Road. Follow Round Valley road 1.1 miles, here it turns to the left, continue down North Round Valley another 1.3 mile to Birchim Road. Birchim Road is paved, turned left here. Follow Birchim Road 1.6 miles to Lower Rock Creek road, turn left and it is .7 miles back to the start.



37°26'00" N

37°26'00" N

Map created with TOPO! © 2006 National Geographic; © 2005 Tele Atlas, Rel. 8/2005

