

118°22.000' W

118°21.000' W

118°20.000' W

WGS84 118°19.000' W

37°08.000' N

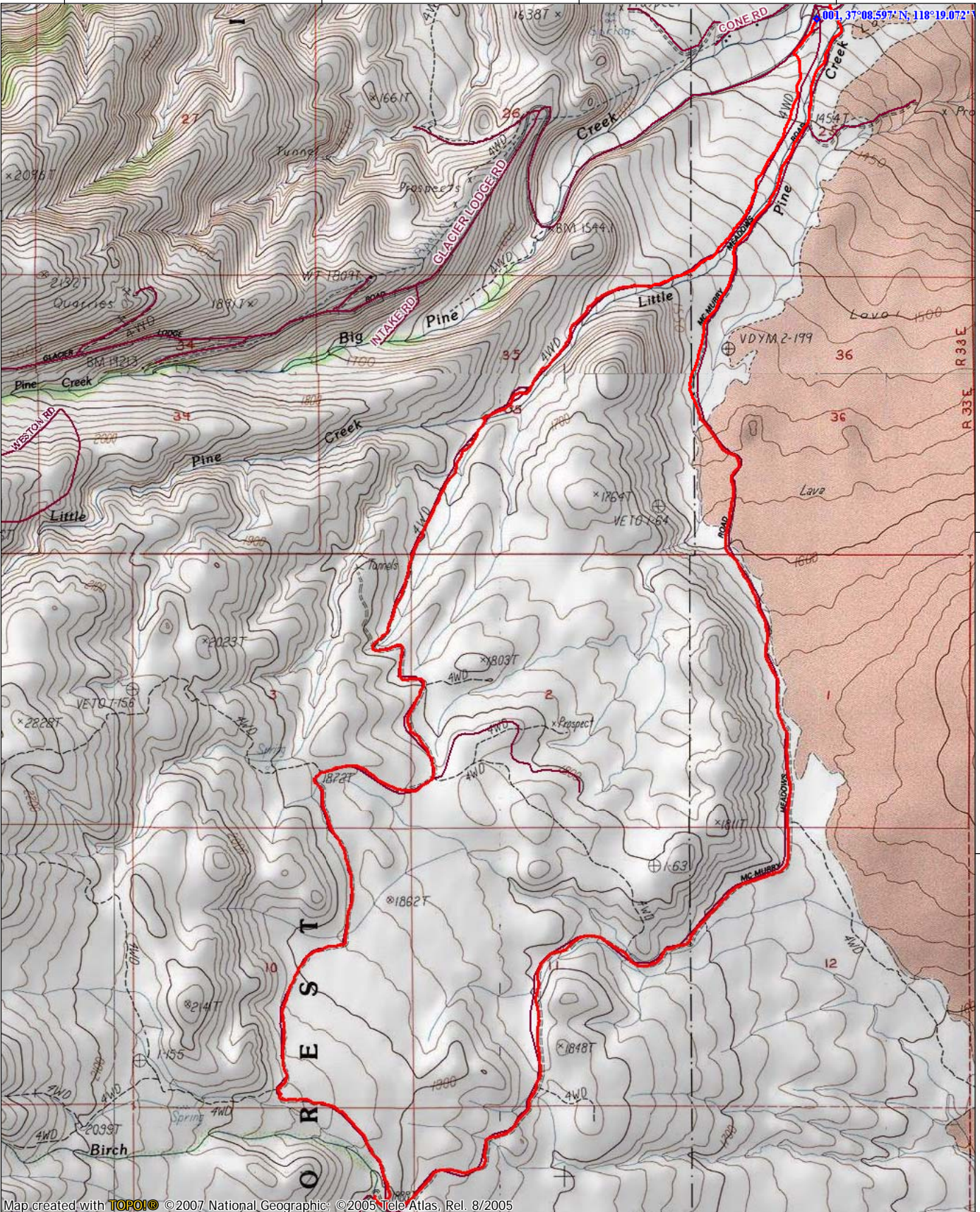
37°07.000' N

37°06.000' N

37°08.000' N

37°07.000' N

37°06.000' N



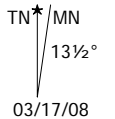
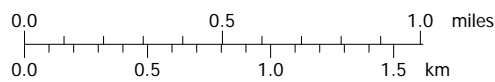
Map created with TOPO! © 2007 National Geographic; © 2005 Tele Atlas, Rel. 8/2005

118°22.000' W

118°21.000' W

118°20.000' W

WGS84 118°19.000' W



## **McMurray Meadows Loop**

**Distance:** 12 Miles

**Elevation Gain:** 1800 Feet

**Location:** Big Pine, CA

**Time of Year:** Sept – May (there can be too much snow after a big storm)

**Directions from Bishop:** South on 395. West (Right) on Crocker. Drive 2.7 Miles to McMurray Meadows Road. Left on McMurray Meadows Road. Park Car.

**Description:** Begin running West up Little Pine Creek, this 4-Wheel Road follows Little Pine Creek for 2.7 miles. At 3.5 miles, there is an intersection of roads, continue West towards the mountains. At 4.6 miles, there is another junction, continue South. At 5.3 miles, you hit the high point of the run at the Birch Creek turn off. Continue South towards McMurray Meadows Road. At McMurray Meadows Road, continue North. (If you need water for dogs go South at the junction for a few hundred yards.) Continue on McMurray Meadows Road for another 6 miles back to your car.