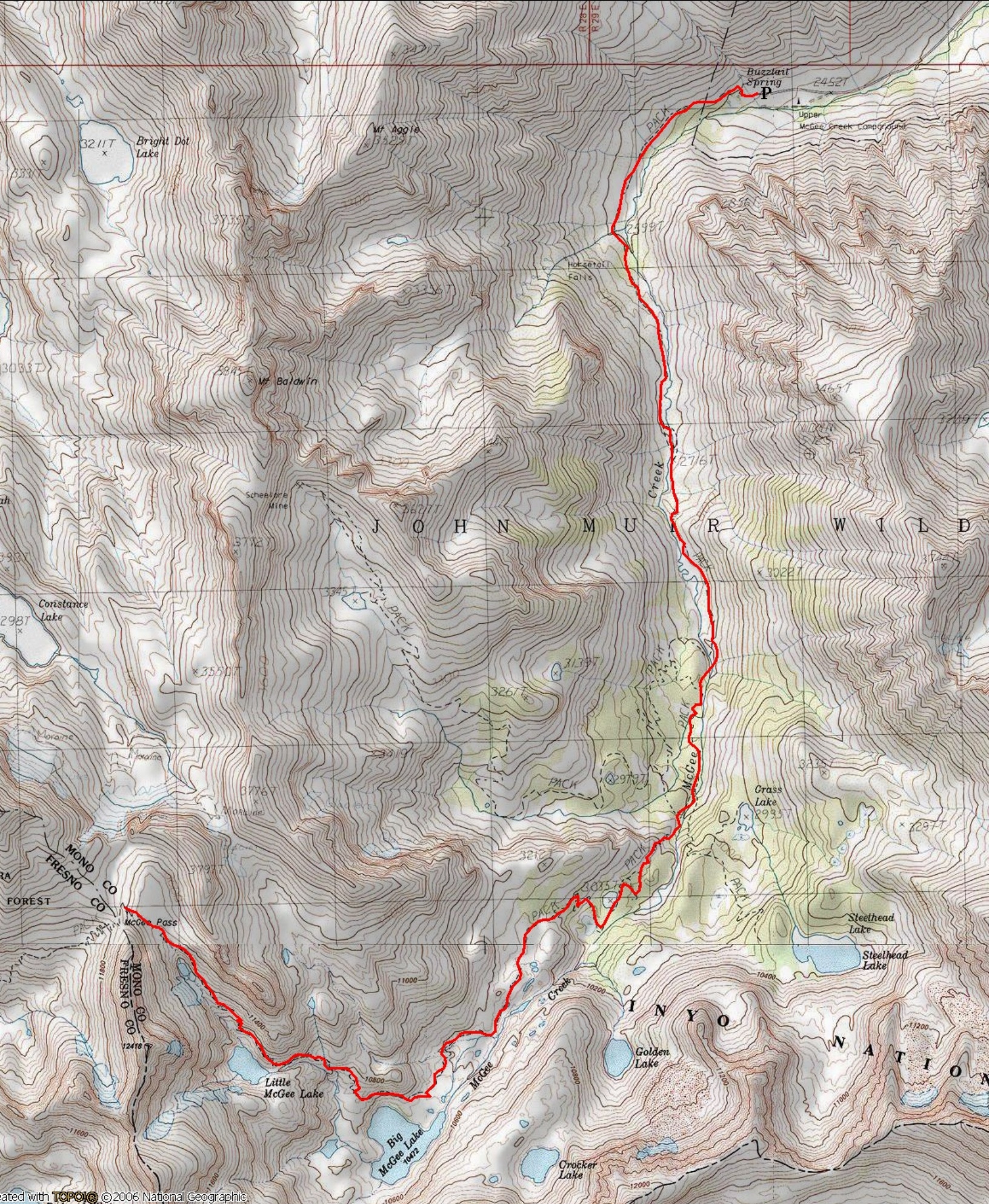


**McGee Pass****Distance** 18 miles round-trip**Elevation Gain:** Approx. 4,100ft gain**Location:** McGee Pass Trailhead**Time of Year:** May through October (Snow may be present through late-July)

**Directions from Bishop:** Head North on HWY 395 up Sherwin Grade. You will pass the community of Crowley Lake on your left-hand side. Shortly after you will turn left at McGee Creek Rd. At the 4-way stop, stay straight on McGee Creek Rd. You will follow the road to its end at the McGee Pass trailhead parking lot.

**Description:** From the trailhead, head south on the well-used trail that follows along McGee Creek. After approximately 2.7 miles you will come to a fork in the trail- stay left and continue to follow McGee Creek. You will encounter a second junction around mile 3.5. Follow the sign for McGee Pass (stay right at the fork; if you turn left you will end up at Steelhead lake). From here, the trail switchbacks steeply up to McGee Lakes. There is one final climb up to the pass once you are beyond Lower McGee Lake. The trail tops out just below Red Slate Mountain's South-eastern slopes. Turn around here and head back to the trailhead.



Map created with TOPOIG © 2006 National Geographic

**NATIONAL GEOGRAPHIC**

