

Agnew Meadows to Tuolumne Meadows

Distance 26 miles

Elevation Gain: 4540 Feet Up and 4180 Feet Down

Location: Start at Agnew Meadows approximately 8.5 miles west of the Town of Mammoth Lakes.

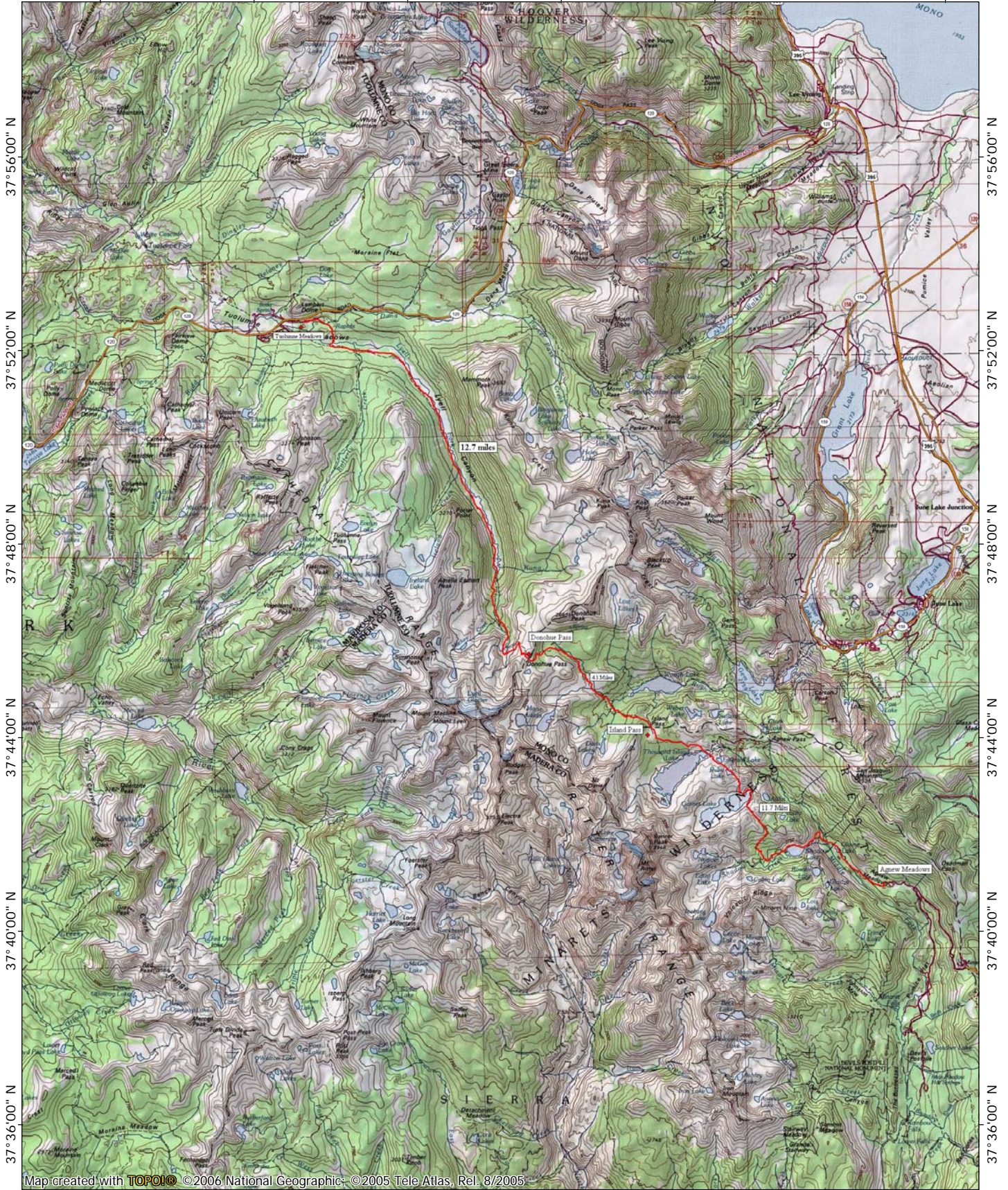
Time of Year: Mid June to Mid October (Likely to run into snow over Donahue Pass from June to mid-July.

Directions from Bishop: Take Highway 395 north 40 miles to Highway 203 (Mammoth Jct.). Take Hwy 203 about 12 miles west to Agnew Meadows. You may be required to take the shuttle bus down to Agnew from Mammoth Mountain Inn. Cost is \$7.00.

Description: Follow the River to the Shadow Lake Trail jct. and turn left or west (You can continue up the River Trail to Thousand Island Lake for a somewhat shorter and easier, but less scenic run). At the west end of Shadow Lake you'll intersect the John Muir Trail, turn right or north here and follow it another 4.5 miles to Garnet Lake. Continue north on the John Muir Trail 1.7 miles to Thousand Island Lake, another 2 miles brings you the Island Pass, the first of two passes. From Island Pass it's 4.3 miles to Donahue Pass, the high point of the run. From Donahue Pass it's 12.7 miles to Tuolumne Meadows. You can run this in reverse as well.

TOPO! map printed on 05/17/07 from "Agnew Meadows to Tuolumne Meadows.tpo"

119°26'00" W 119°22'00" W 119°18'00" W 119°14'00" W 119°10'00" W WGS84 119°04'00" W

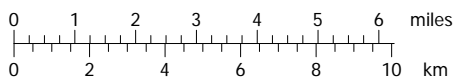


37°56'00" N
37°52'00" N
37°48'00" N
37°44'00" N
37°40'00" N
37°36'00" N

37°56'00" N
37°52'00" N
37°48'00" N
37°44'00" N
37°40'00" N
37°36'00" N

Map created with TOPO! © 2006 National Geographic © 2005 Tele Atlas, Rel. 8/2005

119°26'00" W 119°22'00" W 119°18'00" W 119°14'00" W 119°10'00" W WGS84 119°04'00" W



14 1/2°
05/17/07